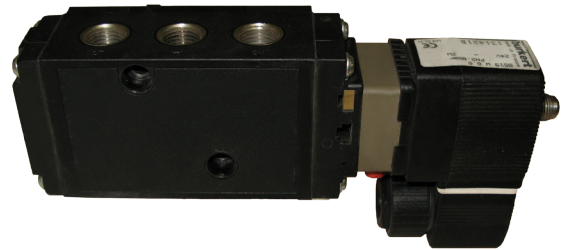


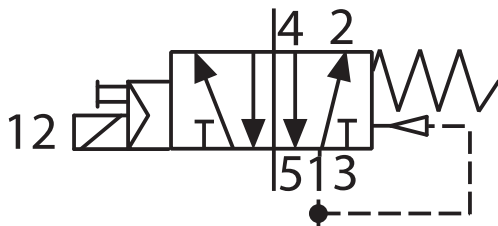
- Corps en polyamide
- Indice de protection IP65
- Raccordement NAMUR suivant VDI/VDE 3845
- Avec ou sans commande manuelle de secours

bürkert

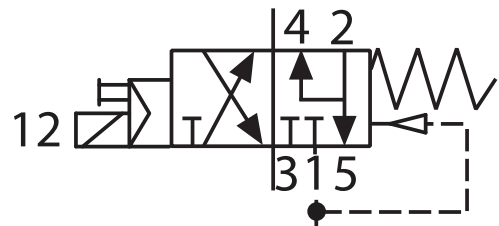


FONCTION:

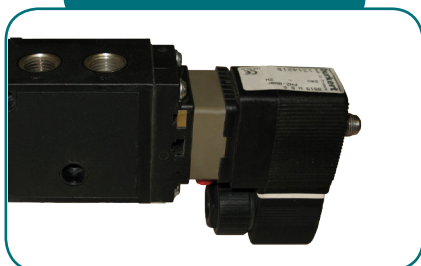
Exécution 5/2



Exécution 3/2



MNAM



- Tensions: 24V DC, 24V AC, 110V DC, 110V AC, 230V DC et 230V AC

MNAMX



- Tensions: 24V UC, 110V UC et 230V UC
- ATEX II 2G Ex eb mb IIC T5 Gb
- ATEX II 2G Ex mb tb IIIC T95°C Db

MNAMXC



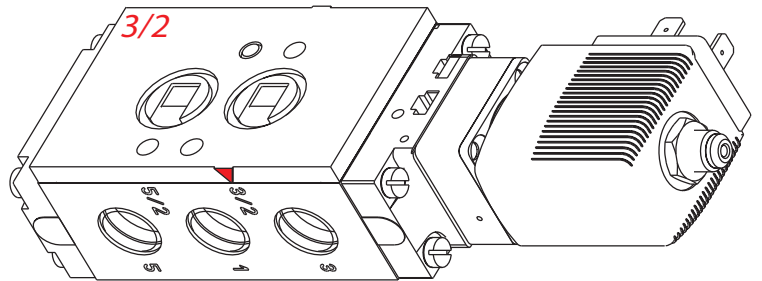
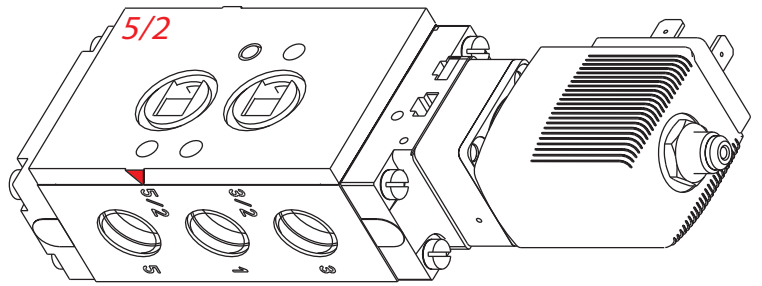
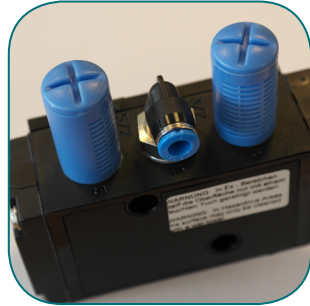
- Tensions: 24V UC, 110V UC et 230V UC
- ATEX II 2G Ex mb IIIC T5 Gb
- ATEX II 2G Ex mb IIIC T95°C Db

MNAMI



- Tensions: 24V DC
- ATEX II Ex ia IIC T6

RACCORDEMENTS OPTIONELS



REGULATEUR DE VITESSE

BLOC RENIFLARD

EMBASE D'ARRET & PURGE

