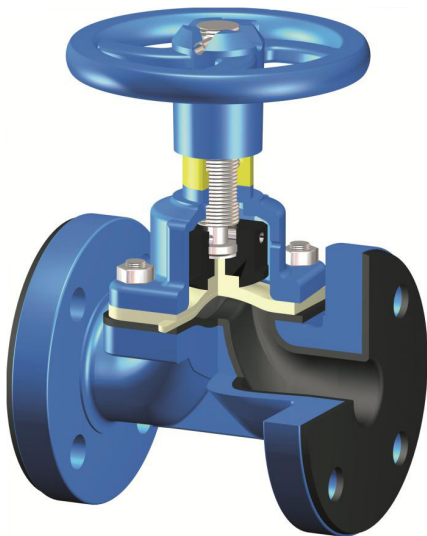




- Body in nodular cast iron GGG 40, cast iron GG25, steel, stainless steel, Monel, Hastelloy
- Body with lining or coating
- Seatless design (no machined seat)
- Self draining
- DN 8 ~ DN 350
- Diaphragm can be replaced without removing the valve from the piping

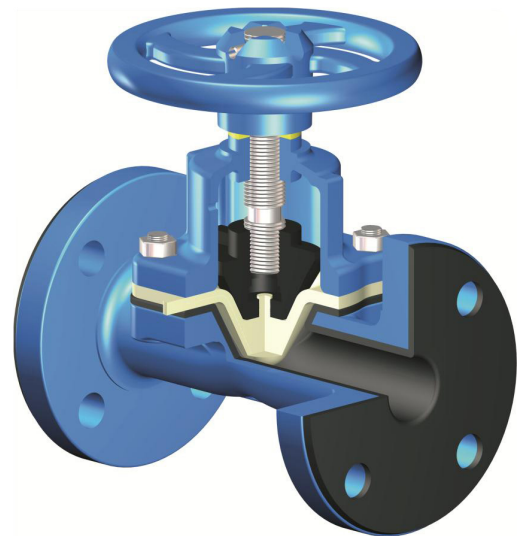


TYPE W
Reduced bore ('Weir')



- DN 8 ~ DN 350
- BSP, NPT
- Flanges DIN PN10/16
- Flanges ANSI 150
- Face-to-face: BS 5156 and DIN 3202F1
- Fluoropolymer linings available
- PTFE diaphragms

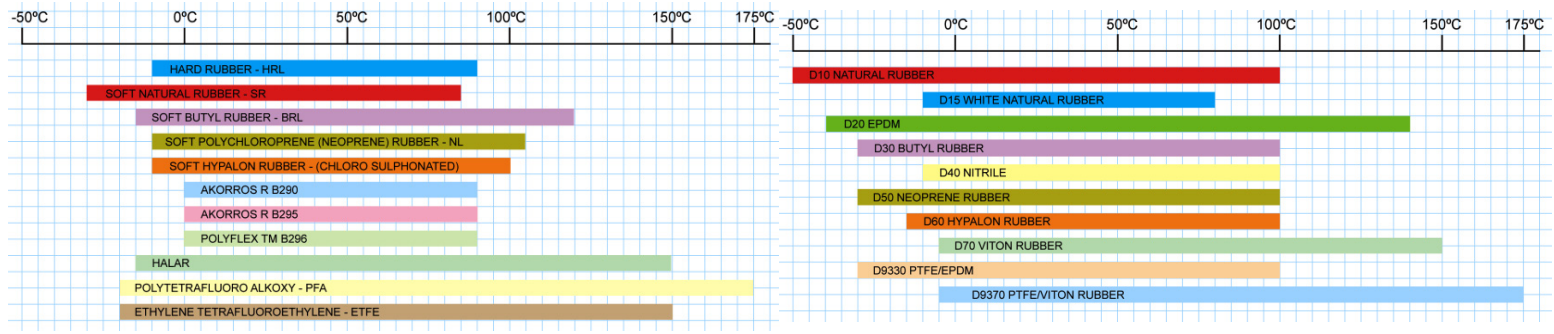
TYPE ST
Full bore ('Straight-through')



- DN 15 ~ DN 350
- BSP, NPT
- Flanges DIN PN10/16
- Flanges ANSI 150
- Face-to-face: BS 5156 and DIN 3202F1
- Rubber linings only
- No diaphragms in PTFE

LINING

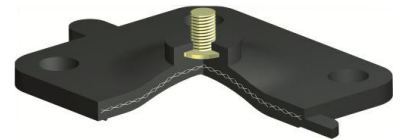
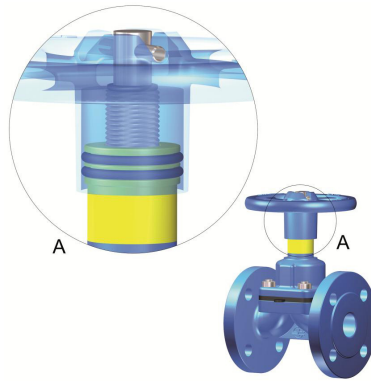
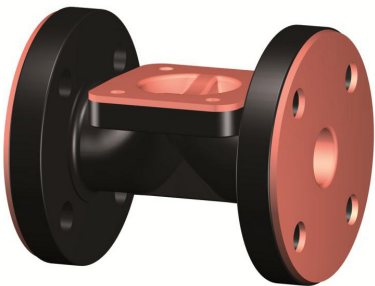
DIAPHRAGM



LINING

STEM SEALING

DIAPHRAGM



PARTS TYPE W

THREADED

PARTS TYPE ST



PNEUMATIC ACTUATOR

